



# Junction Avenue Corridor Study

CITY OF  
*Sturgis*

SD  
DOT

A corridor planning study is being performed for a portion of Junction Avenue, in Sturgis, SD. The study area is approximately 1.1 miles in length, beginning at Pineview Drive, south of Interstate 90, and continuing north to Harmon Street.

## SCOPE OF WORK

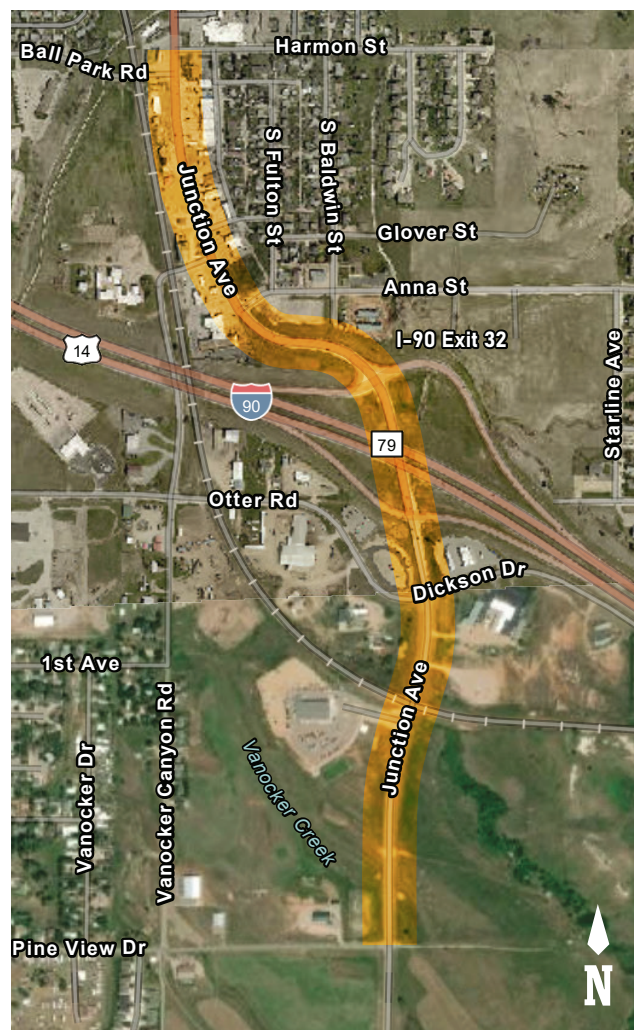
The purpose of this study is to evaluate existing and anticipated future conditions of the corridor and determine potential near- and long-term improvements.

The planning project will:

- Evaluate existing and potential configurations for each of the intersections
- Evaluate the need for additional through and turning lanes
- Develop a cost-benefit based access management plan along the corridor
- Identify and prioritize potential improvements to support the next 30 years of growth and development
- Outline scope, limits, and timing of potential projects constructable within shortened construction seasons to minimize impacts to the annual motorcycle Rally

This study is not evaluating the I-90 Exit 32 interchange, however potential improvements may be identified regarding how the interchange interacts with Junction Avenue (i.e., turn lane modifications on the off ramps, type of intersection control).

## PROJECT AREA MAP



# Junction Avenue Corridor Study

As part of the planning study, the project team will be evaluating existing conditions, identifying current and future deficiencies and issues, and then recommending potential solutions. Listed below are the existing conditions currently being evaluated.

## **SURFACE CONDITION**

The concrete street was constructed in 1999 and 2005, and the pavement remains in good condition.

## **STORMWATER DRAINAGE**

There is storm sewer throughout the corridor and drainage does not appear to be an issue.

## **CORRIDOR SAFETY**

- **Crashes:** Based on a review of five years of crash data, the only intersection with recurring crashes is Ball Park Road. However, 80% of these crashes are considered non-reportable, meaning the value of property damage is low. Additionally, recurring run-off road crashes have been reported on the westbound I-90 off ramp.
- **Curve:** The radii of the two curves between the I-90 interchange and Anna Street do not meet the current SDDOT design standards for a 35-mph street.
- **Access management:** There are currently 23 private driveways in study area, 20 of which are concentrated in the commercial area north of I-90. This density of driveways can impact traffic operations and safety, including pedestrian safety along sidewalks.

## **INTERSECTIONS**

There are nine intersections in the project area, each being evaluated for:

- **Operations:** Evaluation of existing conditions indicate no current operational deficiencies; however, evaluation of future traffic volumes indicates that operational deficiencies could be experienced at the intersections of: eastbound I-90 off ramps at Exit 32, westbound I-90 off ramps at Exit 32, and Anna Street.
- **Alignment:** There are two locations in the corridor where two t-intersections are close in proximity but not aligned east-west (Anna/Vanocker Canyon and Ball Park/Harmon). This misalignment contributes to non-standard turning patterns and results in the potential for additional crashes as compared to a standard four-legged intersection.

## **PEDESTRIAN AND BIKE FACILITIES**

- **Accessibility:** Throughout the study area, many of the existing sidewalk ramps do not satisfy accessibility criteria. There are also multiple locations at the end of marked crosswalks that do not have ramps.
- **Sidewalks:** There are lengthy segments where sidewalks do not exist. South of Anna Street, there is no sidewalk on either side of Junction Avenue. Between Anna Street and Ball Park Road, there is no sidewalk on the west side of Junction Avenue.
- **Junction Avenue Crossings:** The only designated crossings of Junction Avenue are at Ball Park Road.
- **Bike Paths:** There are no current bike path connections to the portion of the study area south of I-90.

## **IMPACTS OF GROWTH**

There are several current and future development projects near the study area. The study will identify potential improvements to accommodate the increased traffic.

## **CORRIDOR AESTHETICS**

Exit 32 of I-90 is a primary gateway into Sturgis for both residents and visitors. This study provides an opportunity to plan for the future look and feel of Junction Avenue.

**The public is invited to share experiences and thoughts about Junction Avenue between Pineview Drive and Harmon Street. Please share your input by December 30.**



Public input can be submitted online at [surveymonkey.com/r/JunctionAvenue](https://surveymonkey.com/r/JunctionAvenue) or sent to:

**Brittney Ragels, City of Sturgis**  
bragels@sturgisgov.com  
1040 Harley-Davidson Way  
Sturgis, SD 57785.





# Junction Avenue Corridor Study

## PROCESS OVERVIEW

Work on the corridor study began in August 2022, and the study is anticipated to take one year to complete.

|  | 2022 |     |     |                  |     | 2023 |     |     |                  |     |     |     |
|--|------|-----|-----|------------------|-----|------|-----|-----|------------------|-----|-----|-----|
|  | AUG  | SEP | OCT | NOV              | DEC | JAN  | FEB | MAR | APR              | MAY | JUN | JUL |
| Study Advisory Team Meetings                           | ●    |     |     | ●                |     | ●    |     |     | ●                |     | ●   |     |
| Existing Conditions Analysis & Identification of Needs | ■    |     |     |                  |     |      |     |     |                  |     |     |     |
| Identification of Solutions                            |      |     |     |                  | ■   |      |     |     |                  |     |     |     |
| Concept Development                                    |      |     |     |                  |     | ■    |     |     |                  |     |     |     |
| Project Implementation Plan                            |      |     |     |                  |     |      |     | ■   |                  |     |     |     |
| Recommendations  |      |     |     |                  |     |      |     |     |                  | ■   |     |     |
| Public Involvement                                     |      |     |     | ● Project Mailer |     |      |     |     | ● Public Meeting |     |     |     |

A Study Advisory Team (SAT) comprised of representatives from SDDOT and the City of Sturgis has been formed to guide the development of the corridor study.

Project area stakeholders and the public will be invited to provide input twice during the study.

- The first round of public involvement will occur in late fall 2022.
- An open house public meeting will be hosted in spring 2023.

## PROJECT CONTACTS

For more information, visit [www.sturgis-sd.gov/JunctionAvenueCorridorStudy](http://www.sturgis-sd.gov/JunctionAvenueCorridorStudy) or contact one of the following:

### CITY OF STURGIS

Brittney Ragels

[bragels@sturgisgov.com](mailto:bragels@sturgisgov.com)

### SDDOT PROJECT MANAGER

Steve Gramm

[Steve.Gramm@state.sd.us](mailto:Steve.Gramm@state.sd.us)

### CONSULTANT PROJECT MANAGER

Mark Lutjeharms

[mlutjeharms@jeo.com](mailto:mlutjeharms@jeo.com)



This project is part of SDDOT's annual State Planning & Research (SPR) program for local governments.